

# SPYDER II

EXILE's new Spyder II direct-to-screen printer provides the ultimate in quality, while simplifying the process of creating screen masks. This high-resolution device can image screens at over two sq ft per minute for ultra fast throughput. Perfect for the busy screen room, or any screen printer that is looking to eliminate film, reduce labour, speed up job turnaround, and improve print quality.

The Spyder II has a new streamlined interface with easy to use touch screen controls. It boasts increased speed, resulting in improved through-put and greater mechanical precision and production efficiency, while simultaneously offering improved print quality with enhanced dot placement. With revised electronics, the new Spyder II provides a simplified structure, improved performance, control and long term reliability.

The Spyder II uses heated wax ink, with a robust phase-change inkjet head technology, to place a high density image directly on to a coated screen. The system can print up to 1200 dpi, allowing halftone frequencies up to 110 lpi. The Spyder 30 supports standard frames up to 30"x40" (76cm x 102cm), while the larger Spyder 52 supports frame sizes up to 56"x50" (142cm x 127cm).

SPYDER II RIP software options include Exile's own SCREENMAKER RIP for Windows or a fully featured Harlequin RIP for Mac OSX or Windows, both of which provide fast and reliable processing of Postscript & PDF files. The Spyder II will also accept 1-bit Tiff files from any other RIP so it will easily fit into an existing pre-press workflow.

Backing the system is EXILE's outstanding service and support. Whether onsite, over the phone or web, our technicians will keep you printing smoothly and efficiently.

## Direct-to-Screen

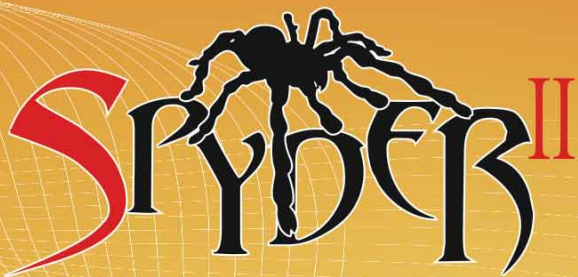
### Now with High Speed Bi-directional Printing

- \* Eliminates Film
- \* Reduced Labor Costs
- \* Precision Placement
- \* Faster Press Setup
- \* Improved Quality
- \* Reduce Exposure Times



TECHNOLOGIES

[www.exiletech.co.uk](http://www.exiletech.co.uk)  
[sales@exiletech.co.uk](mailto:sales@exiletech.co.uk)



# Direct-to-Screen System

Equipment Specifications	
<b>Model</b>	Spyder II Direct-to-Screen system
<b>Technology</b>	Phase-change inkjet / Solid ink
<b>Resolution</b>	600 dpi and 1200 dpi
<b>Halftone Capability</b>	75 lpi @ 600 dpi / 110 lpi @ 1200 dpi
<b>Imaging Speed</b>	Approximately 2.5 sq ft/min (14 sq m/h) @ 600dpi Approximately 1.5 sq ft/min (8 sq m/h) @ 1200dpi
<b>Accuracy</b>	.001" from screen to screen
<b>Power Requirements</b>	120v/220v 50-60 HZ 15 amp
<b>Compressed Air</b>	Required
<b>Network</b>	Ethernet
<b>Operating Temperature</b>	50°F to 86°F / 10°C to 30°C
<b>Operating Humidity</b>	35% to 75% non-condensing
<b>Ink Type</b>	Solid block / Water dispersable photo resist mask

Model	Spyder II DTS 30	Spyder II DTS 52
<b>Max Media Size</b>	30" w x 40" h (76 cm x 102 cm)	56" w x 50" h (142 cm x 127 cm)
<b>Max Image Size</b>	25" w x 30" h (63.5 cm x 76 cm)	52" w x 40" h (132 cm x 102 cm)
<b>Dimensions</b>	36" x 51" x 64.5" (92 cm x 130 cm x 164 cm)	36" x 80" x 64.5" (92 cm x 203 cm x 164 cm)
<b>Weight</b>	300 lbs (136 kg)	340 lbs (150 kg)

RIP Specifications	
<b>RIP Type</b>	RTI Harlequin RIP or SCREENMAKER RIP (Both optional)
<b>Platforms</b>	Windows v7 or later, Mac OSX (Harlequin only)
<b>Screening</b>	AM and FM (stochastic) screening
<b>Input File Formats</b>	Postscript III, PDF, EPS, TIFF
<b>RIP Options</b>	Auto Trapping, Color Management / Proofing, Hybrid Screening

EXILE Technologies (USA)  
7007 Pinemont Drive  
Houston, TX 77040, USA  
Toll Free: +1 800-747-7651  
Tel: +1 713-343-5662  
www.exiletech.com  
sales@exiletech.com

EXILE Technologies Limited  
F3 Enterprise Way, Luton,  
Bedfordshire, LU3 4BU, ENGLAND  
Tel: +44 (0)1582 573980  
Fax: +44 (0)1582 574945  
www.exiletech.co.uk  
sales@exiletech.co.uk



TECHNOLOGIES